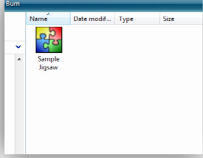


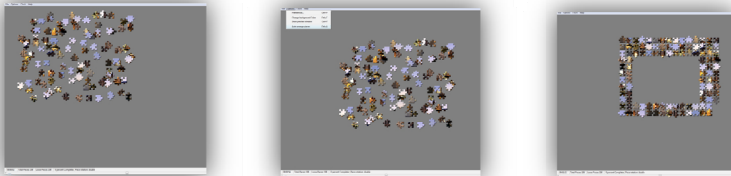


Jigsaw Instructions

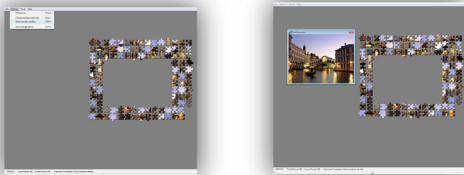
Double click the jigsaw file to open it.



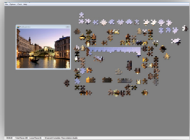
You will now see your jigsaw pieces mixed up, click on options then Auto arrange. This will define the area required for your completed jigsaw.



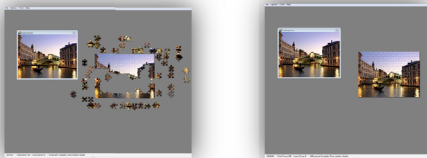
Now click on Options and preview finished puzzle, this will give you an overview of the finished jigsaw.



Start your jigsaw.



You can manually save by going to File > Save or when you close the jigsaw you will be prompted to save your position. The next time you open your jigsaw you will be asked if you want to open the saved version.



No messy jigsaws scattered over your dining table, no losing pieces, have countless numbers of jigsaws that take up minimal space on your computer.

Thanks for purchasing a personalised jigsaw.

Gordon

GHBDesigns

www.ghbdesigns.co.uk

email: info@ghbdesigns.co.uk